

Incipit Lamentatione Jeremiae Prophetæ

B.M. Montp. ms. 120
fragmenta liturgica
St Guilhem, XIIIe
Transcription
Luis Barbán



leph -

(ph)

2

Quo mo - do se - det so - la ci - vi - tas ple - na po - pu - lo

3

Fa - cta est qua - si vi - du - a do - mi - na gen - ti - um

4

Pri - (n) - ceps pro - vi - (n) - ci - a rum fa - cta est sub tri - bu - to

5

Ie ru - sa - lem Ie - ru - sa - lem co - (n) - ve - (r) - te - re a(d) Do - minum De - um tu - um



eth

(th)

7

Plo - rans plo - ra - vit in no - cte et la - cri - mæ e - (i) - us in ma - xi - lis e - (i) - us

8

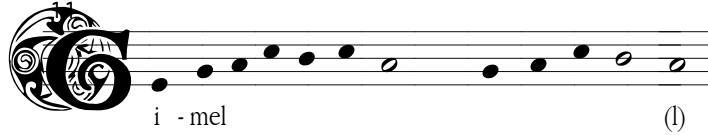
No (n) est qui con - so - le - tur e - am ex o - mni - bus ca - ris su - is

9

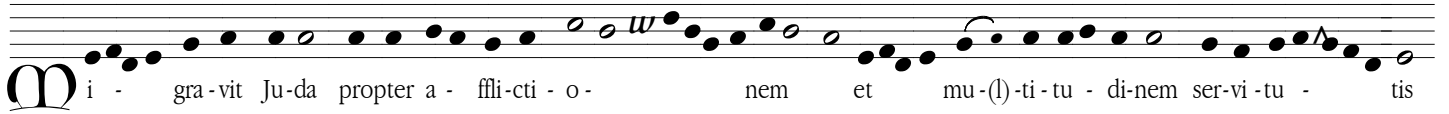
O(m) - nes a - mi - ci e - ius spre - ve - ru - (nt) e - am et fac - ti sunt e - i i - ni - mi - ci

10

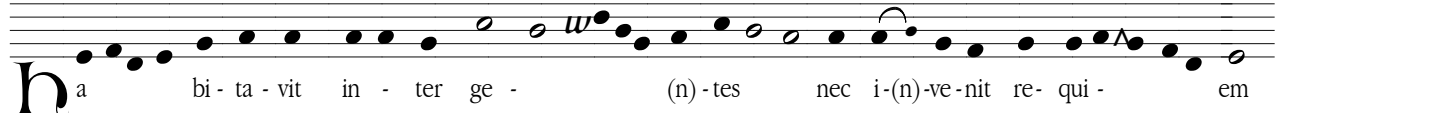
Ie ru - sa - lem Ie - ru - sa - lem co - (n) - ve - (r) - te - re a(d) Do - minum De - um tu - um



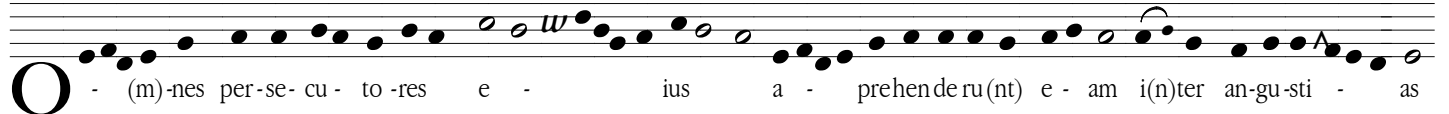
12



13



14



15

